

PRODUCTS-HV5G



NEPTUNE ENGINEERING HV-5G BATCH 1

QC2221 MOTOR WITH 9' BLADES

NOSE SENSOR SEGMENT

BIONIC MULTIMODAL WING

AFFILIATE POWER BATTERY
3S 1AH 2 UNITS

WINGLET NACELLE

MAIN POWER BATTERY

2 UNITS
3S3AH

CONTROL & BUOYANCY SEGMENT

CENTRAL JOIST

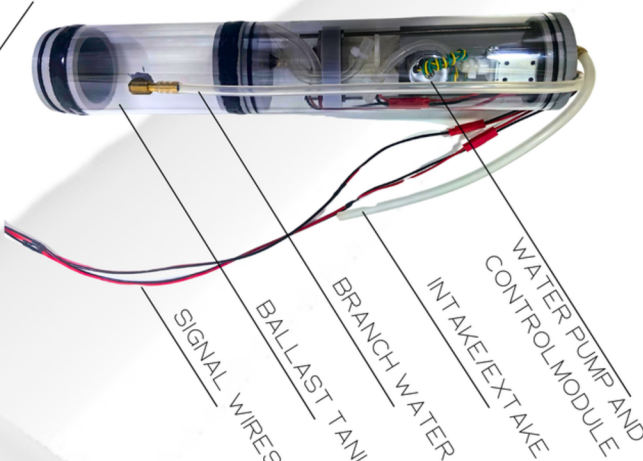
ELEVATOR

RUDDER

AFT CONTROL SEGMENT

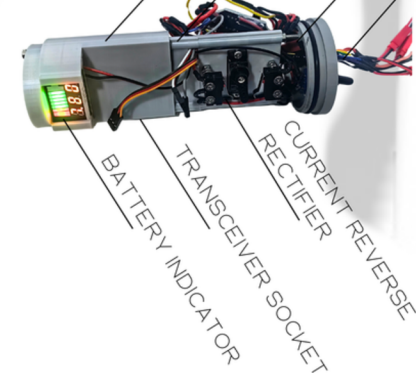
SEMI-CIRCULAR BUOYANCY ENGINE
BUOYANCY ADJUSTMENT - 300G
OPERATIONAL DEPTH - 150M

DIAMETER 60MM
LENGTH 300MM



BATTERY COMPARTMENT
CONTROLLERS
GASKET RING
WATERPROOF SOCKET

DIAMETER 35MM
LENGTH 100MM

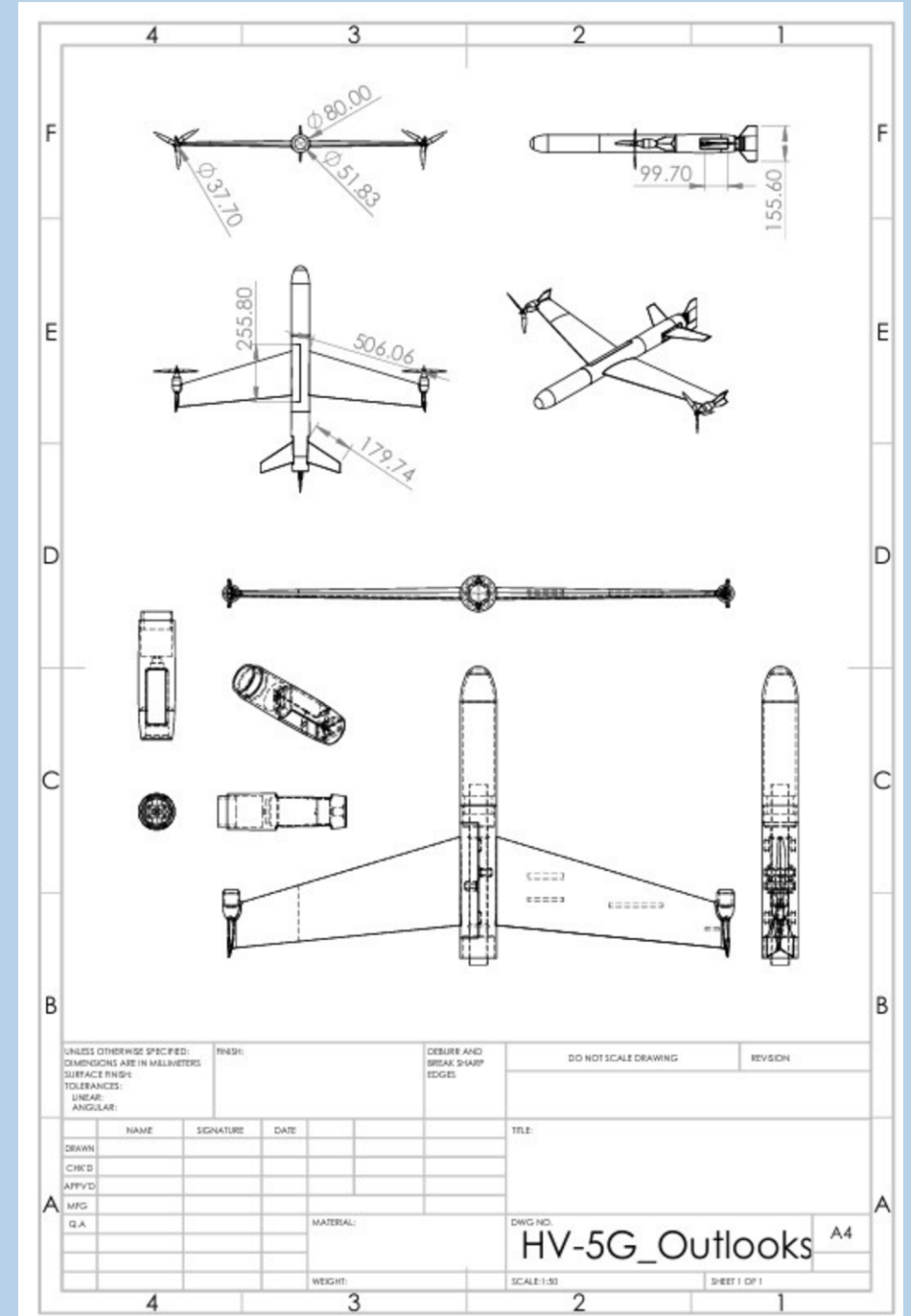


HV-5G OPERATIONAL PARAMETERS

AERIAL CRUISE: 40MIN@119KPH
AERIAL SPEED: 108-162KPH
UNDERWATER GLIDE: 078KN
UNDERWATER CRUISE: 119MIN@2KN
RANGE: OVER 80KM AERIAL
DURATION: OVER 80H MISSION
PAYLOAD: 2230G
SELF WEIGHT: 4670G*
SIZE: 1010MM*1115MM
HULL: 80MM

CONTROL BATT. DURATION 80H
CONTROL CHANNELS - 4
OPERATIONAL DEPTH - 100M
DATALINK - 30KM (CAN EXTEND)

SELF-DEVELOPED CONTROL
FIRMWARE



PRODUCTS-HV5G

POWER SUPPLY

Default: 2*353Ah, 2*351Ah

Extension: 356Ah

Control Power: 352Ah

MOVEMENT

Flight: 108-162kph

Glide: 0.55-0.72kn

Cruise: 1.2-2.0kn

Range: >80km

Duration: >80hrs

Transition: Impact/Glideoff

Launch: Aerial/Catapult

Reliability: 96%*

SENSORS AND COMMS

Default: Camera, IR Camera (SIYI)

Comms: FM30 with Antenna +15dB

Datalink: I2C, RS232

Sensors: Depth, Temperature

Extension: 4*I2C Devices

Additional Datalink: 1

CONTROLS

Manual: SIYI-MK15

Automated: Serial Port

Algorithm: LQR / PID

Max. Glide Cycle: 30mins

Modes: Flight, Glide, Cruise

***As tested on HV-5C and HV-5G Scaled**